



2023 CATALOG

KARAOKE SPEAKER SYSTEM

KV Series



KV-350

- 8" Karaoke Speaker
- Power Handling 250W
- Impedance 8 ohms
- Freq. Resp. 57Hz-20KHz
- Sensitivity 90 dB
- With pole mount for speaker stand



KV-450

- 10" Karaoke Speaker
- Power Handling 450W
- Impedance 8 ohms
- Freq. Resp. 53Hz-20KHz
- Sensitivity 90 dB
- With Pole mount for speaker stand



KV-650

- 12" Karaoke Speaker
- Power Handling 650W
- Impedance 8 ohms
- Freq. Resp. 48Hz-20KHz
- Sensitivity 93 dB
- With pole mount for speaker stand

KR Series



KR-308

- 8" Karaoke Speaker
- Power Handling 250W
- Impedance 8 ohms
- Freq. Resp. 55Hz-20KHz
- Sensitivity 90 dB
- With pole mount for speaker stand



KR-310

- 10" Karaoke Speaker
- Power Handling 450W
- Impedance 8 ohms
- Freq. Resp. 50Hz-20KHz
- Sensitivity 90 dB
- With pole mount for speaker stand



KR-312

- 12" Karaoke Speaker
- Power Handling 650W
- Impedance 8 ohms
- Freq. Resp. 45Hz-20KHz
- Sensitivity 93 dB
- With pole mount for speaker stand

KARAOKE SPEAKER SYSTEM

KR Active Series (STEREO SOUND)



NEW!

KR-708A (Active)

- 8" Karaoke Speaker
- 1pc Active & 1 Pc Passive
- Power Handling 300W
- Impedance 4 ohms
- Freq. Resp. 50Hz-20KHz
- Sensitivity 95 dB
- 41(H) x 28(W) x 28(D) cm
- With pole mount for stand

FEATURES

- USB Mp3 Music
- LCD Display
- Bluetooth Function
- Line/AUX input
- FM Radio
- 2 Mic In
- Sub Out



NEW!

KR-710A (Active)

- 10" Karaoke Speaker
- 1pc Active & 1 Pc Passive
- Power Handling 500W
- Impedance 4 ohms
- Freq. Resp. 45Hz-20KHz
- Sensitivity 95 dB
- 43(H) x 33(W) x 30(D) cm
- With pole mount for stand

FEATURES

- USB Mp3 Music
- LCD Display
- Bluetooth Function
- Line/AUX input
- FM Radio
- 2 Mic In
- Sub Out



NEW!

KR-712A (Active)

- 12" Karaoke Speaker
- 1pc Active & 1 Pc Passive
- Power Handling 700W
- Impedance 4 ohms
- Freq. Resp. 40Hz-20KHz
- Sensitivity 97 dB
- 49(H) x 35(W) x 36(D) cm
- With pole mount for stand

FEATURES

- USB Mp3 Music
- LCD Display
- Bluetooth Function
- Line/AUX input
- FM Radio
- 2 Mic In
- Sub Out

Z1-PRO(Active)

- 8" 2 Way Bass Reflex
- 1 pc Active & 1 pc Passive
- Power Handling 200W
- Impedance 4 ohms
- Freq. Resp. 45Hz-20KHz
- Sensitivity 96 dB

FEATURES

- USB Mp3 Music
- LCD Display
- Bluetooth Function
- Line/AUX input
- 1 Mic Input
- 33(H) x 25(W) x 29(D) cm
- With pole mount for stand



XCITE-8 Mini Component

- 150W x 2 Max Power
- Bluetooth / USB / MP3 music
- FM Radio
- Line input / Sub output
- 2 Mic input
- Echo, Bass, Treble & Balance control
- 2 x 8" 2 way Bass Reflex speaker system



Mini Component



NEW!

VSX-365

- 300W x 2 Max Power
- Bluetooth / USB / MP3 music
- FM Radio
- AUX input
- 2 Line input / Sub output
- 2 Mic input
- Echo, Bass, Treble & Balance control
- 2 x Dual 6.5" 2 way Bass Reflex speaker system

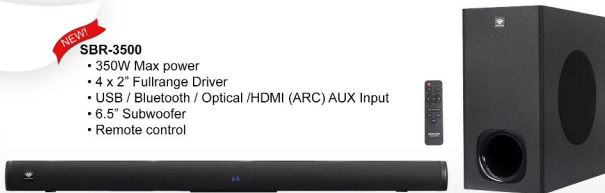
Soundbar

**2.1 Channel
with Subwoofer**

NEW!

SBR-3500

- 350W Max power
- 4 x 2" Fullrange Driver
- USB / Bluetooth / Optical /HDMI (ARC) AUX Input
- 6.5" Subwoofer
- Remote control



NEW!

SBR-5000

- 500W Max power
- 4 x 2.5" Fullrange Driver
- USB / Bluetooth / Optical /HDMI (ARC) AUX Input
- 6.5" Subwoofer
- Remote control



PLASTIC MOLDED SPEAKER

EON Series



EON-8

- 8" 2 Way Bass Reflex
- Low 1.5" Vcoil
- Hi 1" Vcoil
- 200 Watts
- 8 Ohms
- 96dB
- 50Hz-20KHz

EON-8A

- 100 Watts Amplifier
- USB/FM/BT Function
- Mic Input
- RCA Input
- Line Input/Output
- Speaker out
- 39(H) x 25(W) x 21(D)cm



EON-10

- 10" 2 Way Bass Reflex
- Low 2" Vcoil
- Hi 1" Vcoil
- 300 Watts
- 8 Ohms
- 97dB
- 48Hz-20KHz

EON-10A

- 150 Watts Amplifier
- USB/FM/BT Function
- XLR Line Input/Output
- Mic Input
- RCA Input
- Speaker out
- 49(H) x 33(W) x 26.5(D)cm



EON-12

- 12" 2 Way Bass Reflex
- Low 2" Vcoil
- Hi 1.5" Vcoil
- 500 Watts
- 8 Ohms
- 98dB
- 45Hz-20KHz

EON-12A

- 250 Watts Amplifier
- USB/FM/BT Function
- XLR Line Input/Output
- 2 Mic Input
- RCA Input
- Speaker out
- 57.5(H) x 33(W) x 30(D)cm



EON-15

- 15" 2 Way Bass Reflex
- Low 2.5" Vcoil
- Hi 1.7" Vcoil
- 800 Watts
- 8 Ohms
- 98dB
- 40Hz-20KHz

EON-15D

- Class D Amplifier 500Watts
- DSP Management Control
- USB/BT Function
- RCA / XLR Line Input
- 1 Mic / Line Input (switchable)
- XLR Line Output
- 67.5 (H) x 39 (W) x 34.5(D)cm



NEW!

EON-715

- 15" 2 Way Bass Reflex
- Low 2.5" Vcoil
- Hi 1.7" Vcoil
- 800 Watts
- 8 Ohms
- 99dB
- 39Hz-20KHz

EON-715D

- 500W Class D Amp
- 5 Preset DSP control
- USB/BT Function
- Mic / Line XLR combo input
- RCA Input
- XLR Mix out
- 72(H) x 43(W) x 35(D)cm



NEW!

SLX-15

- 15" 2 Way Bass Reflex
- Low 3" Vcoil
- Hi 1.7" Vcoil
- 1000 Watts Max
- 8 Ohms
- 100dB
- 38Hz-20KHz

SLX-15D

- 500W Class D Amp
- 5 Preset DSP Control
- USB/BT Function
- Mic / Line XLR combo input
- RCA Input
- XLR Mix output
- 70(H) x 43(W) x 41(D)cm



DJX-1500

- 15" 3 Way Bass Reflex
- Low -15" with 2" Vcoil
- Mid -5" with 1" Vcoil
- Hi -Horn with 1" Vcoil
- 8 ohms
- 800 Watts Max
- USB/FM/BT Function
- RCA AUX Input / Output
- Mic Priority Function
- 1 Mic / 1 Guitar Input
- 2 UHF Wireless Mic with 98 selectable freq.
- Mic Echo, Repeat, Delay
- 12V DC IN
- Rechargeable Battery
- 103(H) x 45(W) x 32.5(D)cm



NEW!

EON-12HP

- 12" 2 Way Bass Reflex
- Low 2" Vcoil
- Hi 1.5" Vcoil
- 4 ohms
- 450 Watts Amplifier
- USB/FM/BT Function
- XLR Line Input/Output
- RCA Input
- Mic Priority Function
- 1 Mic Input
- 2 UHF Wireless Mic w/ Selectable freq.
- Echo/Repeat/Delay
- 12V DC IN
- Rechargeable Battery
- 57.5(H) x 33(W) x 30(D)cm



NEW!

EON-15HP

- 15" 2 Way Bass Reflex
- Low 2.5" Vcoil
- Hi 1.5" Vcoil
- 8 ohms
- 450 Watts Amplifier
- USB/FM/BT Function
- XLR Line Input/Output
- RCA Input
- Mic Priority Function
- 1 Mic Input
- 2 UHF Wireless Mic w/ Selectable freq.
- Echo/Repeat/Delay
- 12V DC IN
- Rechargeable Battery
- 67.5(H) x 39(W) x 34.5(D)cm



MSR-15

- 15" 2 Way Bass Reflex
- Low 2.5" Vcoil
- Hi 1.7" Vcoil
- 800 Watts
- 8 Ohms
- 100dB
- 38Hz-20KHz
- 72(H) X 45(W) X 42.5(D)cm

WAVE Series



- WAVE-12**
- 12" 2 Way system
 - Low 2" Vcoil
 - Hi 1.5" Vcoil
 - 500 Watts
 - 8 Ohms
 - 97dB
 - 55Hz-20KHz
 - 59(H)x39(W)x32(D)cm



- WAVE-15**
- 15" 2 Way system
 - Low 2.5" Vcoil
 - Hi 1.7" Vcoil
 - 800 Watts
 - 8 Ohms
 - 98dB
 - 45Hz-20KHz
 - 69(H)x45(W)x38(D)cm

TWS Series



- TWS-12D**
- 12" 2 Way system
 - Low 2.5" Vcoil
 - Hi 1.5" Vcoil
 - 800 Watts
 - 4 Ohms
 - 98dB
 - 43Hz-20KHz
 - Class D Amp 500W
 - 4 DSP Preset mode
 - 1 Mic / Line Input
 - HPF Function
 - USB/BT (Stereo) Function
 - RCA / AUX / PL Input
 - XLR Line Output
 - 67(H)x37(W)x32(D)cm



- TWS-15D**
- 15" 2 Way system
 - Low 2.5" Vcoil
 - Hi 1.5" Vcoil
 - 800 Watts
 - 4 Ohms
 - 98dB
 - 40Hz-20KHz
 - Class D Amp 500W
 - 4 DSP Preset mode
 - 1 Mic / Line Input
 - HPF Function
 - USB/BT (Stereo) Function
 - RCA / AUX / PL Input
 - XLR Line Output
 - 71(H)x43(W)x36(D)cm

ART Series



- ART-12**
- 12" 2 Way Bass Reflex
 - Low 2.5" Vcoil
 - Hi 1.7" Vcoil
 - 700 Watts
 - 8 Ohms
 - 98dB
 - 42Hz-20KHz

- ART-12D**
- 500W Class D Amp
 - 5 DSP Preset Mode
 - USB/BT Function
 - 1 Mic / Line XLR combo Input
 - RCA input
 - XLR Mix output
 - 61.5(H) x 36(W) x 34.5(D)cm



- ART-15**
- 15" 2 Way Bass Reflex
 - Low 3" Vcoil
 - Hi 1.7" Vcoil
 - 1000 Watts
 - 8 Ohms
 - 99dB
 - 38Hz-20KHz

- ART-15D**
- 500W Class D Amp
 - 5 DSP Preset Mode
 - USB/BT Function
 - 1 Mic / Line XLR combo input
 - RCA input
 - XLR Mix output
 - 71(H) x 41.5(W) x 40(D)cm

ZLX Series



ZLX-8

- 8" 2 Way Bass Reflex
- Low 1.5" Vcoil
- Hi 1" Vcoil
- 250 Watts
- 8 Ohms
- 96dB
- 50Hz-20KHz

ZLX-8D

- Class D Amplifier 250 Watts
- 5 DSP Preset Mode
- USB/BT Function
- 1 Mic / Line Input (switchable)
- Mic / Guitar Input
- RCA Input
- XLR Line Output
- 43(H) X 28(W) X 24(D)cm



ZLX-10

- 10" 2 Way Bass Reflex
- Low 2" Vcoil
- Hi 1" Vcoil
- 350 Watts
- 8 Ohms
- 97dB
- 48Hz-20KHz

ZLX-10D

- Class D Amplifier 300 Watts
- 5 DSP Preset Mode
- USB/BT Function
- 1 Mic / Line Input (switchable)
- Mic / Guitar Input
- RCA Input
- XLR Line Output
- 50(H) X 31(W) X 26(D)cm



ZLX-12

- 12" 2 Way Bass Reflex
- Low 2.5" Vcoil
- Hi 1.7" Vcoil
- 700 Watts
- 8 Ohms
- 98dB
- 45Hz-20KHz

ZLX-12D

- Class D Amplifier 500 Watts
- 5 DSP Preset Mode
- USB/BT Function
- RCA / XLR Line Input
- 1 Mic / Line Input (switchable)
- XLR Line Output
- 62(H) X 39(W) X 34(D)cm



ZLX-15

- 15" 2 Way Bass Reflex
- Low 3" Vcoil
- Hi 1.7" Vcoil
- 1000 Watts
- 8 Ohms
- 99dB
- 43Hz-20KHz

ZLX-15D

- Class D Amplifier 500 Watts
- 5 DSP Preset Mode
- USB/BT Function
- RCA / XLR Line Input
- 1 Mic / Line Input (switchable)
- XLR Line Output
- 71(H) X 45(W) X 38(D)cm

ZLX Series



ZLX-15SD (Active)

- 15" Subwoofer
- Low 3" Vcoil
- 8 ohms
- 98dB SPL
- Freq. Resp.: 40Hz-3.5KHz
- 800W Class D
- DSP management control
- Phase: 0°-180°
- XLR Line Input/Output
- Crossover Freq.: 80Hz-150Hz
- Size: 565(H) x 445(W) x 545(D)mm



ZLX-18SD (Active)

- 18" Subwoofer
- Low 4" Vcoil
- 8 ohms
- 99dB SPL
- Freq. Resp.: 35Hz-2.5KHz
- 1200W Class D
- DSP management control
- Phase: 0°-180°
- XLRLine Input/Output
- Crossover Freq.: 80Hz-150KHz
- Size: 715(H) x 515(W) x 635(D)mm



ZLX-215 (Passive)

- Dual 15" Bass Reflex
- Low 2.5" Vcoil
- Hi 1.7" Vcoil
- Exit 1"
- 1400 Watts
- 4 ohms
- 103dB SPL
- Freq. Resp.: 35Hz - 20KHz
- 90 X 60 Dispersion

ZLX-215A (Active)

- 1200 Watts Amplifier
- 4 ohms
- 5 Preset DSP Mode
- 2 Combo XLR+1/4" Jack Input
- 1 XLR Mix Output
- Mic/Line (switchable)
- Size: 1125(H) x 435(W) x 455(D)mm

A9 (Active)

- Type: Column Array
- 8 x 3.5" full range woofer
- 15" Subwoofer
- 133dB Max SPL
- Freq. Resp.: 35Hz-20KHz
- 500W+300W Class D Amp
- 5 Preset DSP Mode
- 2 Combo XLR+1/4" Jack Input
- 1 XLR Mix Output
- Mic/Line (switchable)



CEILING SPEAKER



CSL-605

- Frameless Design
- 6" Full Range
- Impedance: 7.2 ohms
- Sensitivity: 93dB
- Freq. Resp.: 100Hz-16KHz
- 100V TAP 6W, 3W



CSL-805

- Frameless Design
- 8" Full Range
- Impedance: 7.2 ohms
- Sensitivity: 94dB
- Freq. Resp.: 95Hz-16KHz
- 100V TAP 10W, 5W



CSL-623

- Frameless Design
- 6" Coaxial w/ Back Cover
- Impedance: 7.2 ohms
- Sensitivity: 93dB
- Freq. Resp.: 90Hz-20KHz
- 100V TAP 10W, 5W, 2.5W



CS-600 (High Fidelity)

- Frameless Design
- Coaxial configuration
- 6" Fiberglass cone
- 1" Titanium Tweeter
- Impedance: 8 ohms
- Sensitivity: 90dB
- Freq. Resp.: 55Hz-20KHz
- RMS Power: 80W

WALL MOUNT SPEAKER



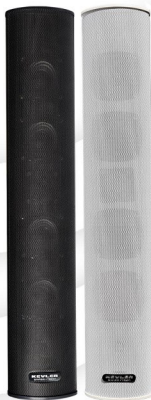
WS-605T

- 6.5" 2 Way bass Reflex
- Impedance: 8 ohms
- Sensitivity: 91dB
- Freq. Resp.: 65Hz-20KHz
- Max Power: 200W
- 100V TAP 40, 20, 10, 5W
- 31(H) x 22(W) x 20(D)cm



WSL-62T

- 6.5" 2 Way bass Reflex
- Impedance: 8 ohms
- Sensitivity: 98dB
- Freq. Resp.: 160Hz-18KHz
- 100V TAP 10W, 6W, 3W
- 18(H) x 16(W) x 12(D)cm



CLM-301T (BLK/WHT)

- 4 X 3" & 1" Dome Tweeter
- Water Proof Aluminum Housing
- Sensitivity: 93dB
- Freq. Resp.: 90Hz-20KHz
- Equipped with bracket
- 100V TAP 60, 30, 15, 8W
- 60(H) x 11(W) x 10(D)cm



WS-5T (BLK/WHT)

- 5" 2 Way Bass Reflex
- Impedance: 8 ohms
- Sensitivity: 90dB
- Freq. Resp.: 80Hz-20KHz
- Max Power: 150W
- 100V TAP 30, 15, 8, 4W
- 28(H) x 17(W) x 15(D) cm



WS-6T (BLK/WHT)

- 6.5" 2 Way bass Reflex
- Impedance: 8 ohms
- Sensitivity: 91dB
- Freq. Resp.: 65Hz-20KHz
- Max Power: 200W
- 100V TAP 30, 15, 8, 4W
- 38(H) x 21(W) x 19(D)cm



PA HORN SPEAKERS

NEW!

VC-100

- Volume control attenuator
- 100 Watts
- 11 steps position including (OFF)
- Push in type connector
- (W)7 x (H)11 x (D)5.5 cm



HF-101

- 10" Aluminum Hifi Horn
- Very clear vocal
- 2 way speaker design
- 5" Woofer + 1" Dome Tweeter
- Sensitivity: 105dB
- Freq. Resp.: 400Hz-8KHz
- 100V TAP 30, 15, 8, 4W
- 25(Dia) X 31(D)cm



NEW!

HS-30S

- 10" Aluminum Horn
- Very clear vocal
- Sensitivity: 107dB
- Freq. Resp.: 380Hz-8KHz
- Power: 100V TAP 30, 15, 8, 4W
- 24.5 (Dia) X 29(D)cm



NEW!

HS-50S

- 13" Aluminum Horn
- Very clear vocal
- Sensitivity: 109dB
- Freq. Resp.: 380Hz-8KHz
- Power: 100V TAP 50, 25, 12, 6W
- 32.5(Dia) X 35(D)cm



HS-65S

- 12" x 15" Plastic Horn
- 2 way speaker design
- 6.5" Woofer + 1" Dome Tweeter
- Very clear vocal
- Sensitivity: 98dB
- Freq. Resp.: 200Hz-9KHz
- Power: 100V TAP 60, 30, 15W
- 39(W) X 31(H) X 37(D)cm



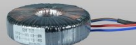
HF-201

- 20" Aluminum Hifi Horn
- 2 way speaker design
- 5" Woofer (High Imp.) + Piezo Tweeter
- Very clear vocal
- Sensitivity: 104dB
- Freq. Resp.: 250Hz-15KHz
- Power: 50W @ 100V TAP
- 50.5(Dia) X 40(D)cm



HF-203

- 20" Aluminum Hifi Horn
- 2 way speaker design
- 5" Woofer + 1" Dome Tweeter
- Very clear vocal
- Sensitivity: 106dB
- Freq. Resp.: 250Hz-18KHz
- Power 70W @8 ohms
- 50.5(Dia) X 40(D)cm



HF-203 Transformer 100V Tap 50W (optional)

WALL MOUNT SPEAKER



AWS-104TB

AWS-104TW (Waterproof)

- 4" 2 Way Full Range
- IP46 Rating
- Impedance: 16Ω
- Sensitivity: 88dB
- Freq. Resp.: 75Hz-20KHz
- Max Power: 100W
- 100V Tap: 40,20,10W



AWS-106TB

AWS-106TW (Waterproof)

- 6.5" 2 Way Full Range
- IP46 Rating
- Impedance: 16Ω
- Sensitivity: 89dB
- Freq. Resp.: 60Hz-20KHz
- Max Power: 200W
- 100V Tap: 80,40,20W



AWS-8 (Waterproof)

- 8" 2 Way Coaxial Speaker
- IP56 Rating
- Impedance: 8Ω
- Sensitivity: 96dB
- Freq. Resp.: 80Hz-18KHz
- Power: 40,80,150W
- 8Ω 200W



AWS-12H (Waterproof)

- 12" 2 Way Coaxial Speaker
- Tweeter (Horn type)
- IP56 Rating
- Impedance: 8Ω
- Sensitivity: 96dB
- Freq. Resp.: 55Hz-18KHz
- Power: 50,100,200W
- 8Ω 300W



LS-525 (Waterproof)

- 1 X 5.5" Coaxial Speaker
- 1 X 3/4" Dome tweeter
- IP56 Rating
- Sensitivity: 86dB
- Freq. Resp.: 65Hz-16KHz
- Power: 100W @ 8Ω
- 100V Tap: 7.5W, 15W, 30W
- Coverage: 360°
- 400(H) x 315(W) x 291(D)mm
- 6.5Kg



CLM-401TB

CLM-401TW (Waterproof)

- 4 X 4" Full Range
- 1 X 1.4" Dome tweeter
- IP56 Rating
- Sensitivity: 94dB
- Freq. Resp.: 120Hz-18KHz
- Power: 200W @ 8Ω
- 100V Tap: 30W, 60W, 120W
- Coverage: 100° x 50°
- 704(H) X 127(W) X 144(D)mm
- 8.5Kg



CLM-601TB

CLM-601TW (Waterproof)

- 6 X 4" Full Range
- IP56 Rating
- Sensitivity: 96dB
- Freq. Resp.: 120Hz-18KHz
- Power: 300W @ 8Ω
- 100V Tap: 37W, 75W & 150W
- Coverage: 100° X 50°
- 979(H) X 127(W) X 144(D)mm
- 11Kg

INTEGRATED AMPLIFIER**GX3UB PRO**

- 300W x 2 Max
- 2 Mic input front, 1 input back
- USB / FM / Bluetooth
- LCD Display
- 3 Input Source A, B, C

- Mic Priority
- Loudness
- Echo, Repeat, Delay function
- Sub out signal
- Feedback Reducer

**GX5 PRO**

- 600W x 2 Max
- 2 Mic Input
- Mic Volume & Echo control
- 2 Input Source A & B
- Feedback Reducer

- Mic Priority
- Loudness
- 3.5mm jack AUX input
- Sub out signal

**GX5UB PRO**

- 600W x 2 Max
- 2 Mic input front, 1 input back
- USB / FM / Bluetooth
- LCD Display
- Mic Volume & Echo control

- 3 Input source A, B, C
- Feedback Reducer
- Mic Priority
- Loudness
- Sub out signal

**GX7 PRO**

- 800W x 2 Max
- 2 Mic Input
- Mic Volume & Echo control
- 2 Input Source A & B
- Feedback Reducer

- Mic Priority
- Loudness
- 3.5mm jack AUX input
- Sub out signal

**GX7UB PRO**

- 800W x 2 Max
- 2 Mic input front, 1 input back
- USB / FM / Bluetooth
- LCD Display
- Mic Volume & Echo control

- 3 Input source A, B, C
- Feedback Reducer
- Mic Priority
- Loudness
- Sub out signal

KEVLER / INTEGRATED AMPLIFIER



NEW!

GX8

- 900W x 2 Max
- 2 Mic Input
- Mic Echo, Repeat, Delay control
- Mic Priority function
- Music Bass, Mid, Treble control
- 2 Input source A & B
- 3.5mm AUX input
- Feedback Reducer
- Loudness
- Mic out, sub out, line out
- 12V DC Output

NEW!

VAC-1000 TUBE-AMPLIFIER

- 800W x 2 Max
- 2 Mic Input front, 1 Back
- Mic Echo, Bass, Mid, Treble control
- Music Bass, Mid, Treble control
- USB, Bluetooth, FM & 3 AUX input
- Optical & Coaxial input
- Built-in feedback reducer
- Boost button
- Mic Priority function
- Mic out & Sub out

GX-4000

- 9000W x 2 Max
- 4 mic input
- 4 individual mic volume
- Mic Low, Mid, Hi control
- Echo, Repeat & Delay adjustment
- USB/FM/Bluetooth Functions
- 2 Line Input source selector
- LCD Display for viewing functions
- Pre-amp loop to power amp
- Feedback Reducer & Loudness function

GX-5000

- 1000W x 2 Max
- 2 mic input
- USB, Bluetooth, AUX1, AUX2
- Mic Bass, Treble, Echo control
- Binding Post & Speakon Terminal
- Line Out, Mic Out & Sub out signal
- Feedback Reducer Button
- Loudness

NEW!

GX-7000

- 1500W x 2 Max
- 2 mic input front, 1 input back
- USB, Bluetooth function
- Input source A, B, C
- Echo, Repeat, Delay adjustment
- Binding Post & Speakon Terminal
- Line Out, Mic Out & Sub out signal
- Feedback Reducer
- Mic Priority
- Loudness

PA AMPLIFIERS

NEW!

**BGM-500UB**

- 450W Multi Zone Mixing Amplifier
- 4-16 ohms with 70 & 100V Line Output
- USB / SD / FM function
- 5-Zone speaker selector + 10 standby Zone
- 4 Microphones Input
- Gain for Mic, AUX & USB
- 2 Aux Input
- Chime function

NEW!

**BGM-300UB**

- 180W Zone Mixing Amplifier
- 4-16 ohms with 70 & 100V Line Output
- USB / SD / FM / Bluetooth function
- 5-Zone speaker selector
- 4 Microphones Input
- Gain for Mic, AUX & USB
- 2 Aux Input
- Chime function

NEW!

**PA-500**

- 450W Power Amplifier
- 4-16 ohms with 70V & 100V Line Output
- XLR Input & Output
- Gain control

X SERIES**X4**

- 2 X 400W @ 8 ohms
- 2 X 600W @ 4 ohms
- 1200W @ 8 ohms Bridge

**X6**

- 2 X 600W @ 8 ohms
- 2 X 900W @ 4 ohms
- 1800W @ 8 ohms Bridge

**X8**

- 2 X 800W @ 8 ohms
- 2 X 1200W @ 4 ohms
- 2400W @ 8 ohms Bridge

MZ SERIES



NEW!



NEW!



PROFESSIONAL POWER AMPLIFIER

MZ-400

- 2 X 400W @ 8Ω
- 2 X 600W @ 4Ω
- 2 X 800W @ 2Ω
- 1000W @ 8Ω Bridge
- 1200W @ 4Ω Bridge

MZ-600

- 2 X 600W @ 8Ω
- 2 X 900W @ 4Ω
- 2 X 1100W @ 2Ω
- 1800W @ 8Ω Bridge
- 2000W @ 4Ω Bridge

MZ-1000

- 2 X 1000W @ 8Ω
- 2 X 1500W @ 4Ω
- 2 X 3000W @ 2Ω
- 3000W @ 8Ω Bridge
- 4000W @ 4Ω Bridge

MZ-1500X

- 4 X 1500W @ 8Ω
- 4 X 2300W @ 4Ω
- 4 X 3700W @ 2Ω
- 4500W @ 8Ω Bridge
- 6850W @ 4Ω Bridge

MZ-2000X

- 2 X 2000W @ 8Ω
- 2 X 3000W @ 4Ω
- 2 X 5000W @ 2Ω
- 6000W @ 8Ω Bridge
- 9000W @ 4Ω Bridge
- Built-in Crossover (HPF/LPF)

TX SERIES**PROFESSIONAL POWER AMPLIFIER****NEW!****TX-200S**

- 2 X 200W @ 8 ohms
- 2 X 400W @ 4 ohms
- 2 X 600W @ 2 ohms
- 600W @ 8 ohms Bridge
- 800W @ 4 ohms Bridge
- Left & Right CH with crossover function
- LPF, BYPASS, HPF
- Adjustable Freq. from 25Hz to 150Hz

NEW!**TX-400S**

- 2 X 400W @ 8 ohms
- 2 X 600W @ 4 ohms
- 2 X 800W @ 2 ohms
- 1000W @ 8 ohms Bridge
- 1200W @ 4 ohms Bridge
- Left & Right CH with crossover function
- LPF, BYPASS, HPF
- Adjustable Freq. from 25Hz to 150Hz

NEW!**TX-600S**

- 2 X 600W @ 8 ohms
- 2 X 800W @ 4 ohms
- 2 X 1000W @ 2 ohms
- 1200W @ 8 ohms Bridge
- 1400W @ 4 ohms Bridge
- Left & Right CH with crossover function
- LPF, BYPASS, HPF
- Adjustable Freq. from 25Hz to 150Hz

NEW!**TX-1000S**

- 2 X 1000W @ 8 ohms
- 2 X 1500W @ 4 ohms
- 2 X 2000W @ 2 ohms
- 2500W @ 8 ohms Bridge
- 3000W @ 4 ohms Bridge
- Left & Right CH with crossover function
- LPF, BYPASS, HPF
- Adjustable Freq. from 25Hz to 150Hz

AR-250

- 2 X 250W @ 8 ohms
- 2 X 450W @ 4 ohms
- 900W @ 8 ohms Bridge
- 1100W @ 4 ohms Bridge

AR-400

- 2 X 400W @ 8 ohms
- 2 X 700W @ 4 ohms
- 1000W @ 8 ohms Bridge
- 1300W @ 4 ohms Bridge

AR-600

- 2 X 600W @ 8 ohms
- 2 X 1000W @ 4 ohms
- 1200W @ 8 ohms Bridge
- 1500W @ 4 ohms Bridge

AR SERIES

PROFESSIONAL POWER AMPLIFIER

NEW!



V5

- 2 X 2350W @ 8 ohms
- 2 X 4400W @ 4 ohms
- 2 X 7000W @ 2 ohms
- 8800W @ 8 ohms Bridge
- 14000W @ 4 ohms Bridge

VSERIES
CLASS TD

NEW!



V7

- 4 X 1300W @ 8 ohms
- 4 X 2100W @ 4 ohms
- 4 X 2500W @ 2 ohms
- 4200W @ 8 ohms Bridge
- 5000W @ 4 ohms Bridge

NEW!



FC-300

- 4 X 300W @ 8 Ω
- 4 X 450W @ 4 Ω
- 2 X 600W @ 8 Ω Bridge



MC2

- 1500W X 2 @ 8 Ω
- 2250W X 2 @ 4 Ω
- 2970W X 2 @ 2 Ω
- 4330W @ 8 Ω Bridge
- 5620W @ 4 Ω Bridge

NEW!



MASSIVE POWER AMPLIFIER

MK5 (4U RACK SPACE)

- 2 X 30000W @ 8 ohms
- 2 X 5000W @ 4 ohms
- 2 X 7000W @ 2 ohms
- 8000W @ 8 ohms Bridge
- 10000W @ 4 ohms Bridge

MKSERIES
CLASS H

PROFESSIONAL PROCESSOR



1231S GRAPHIC EQUALIZER

- Dual 31 Band with precise 45mm fader
- Switchable boost cut +/-6 dB or +/-15 dB
- RF filter Input and Output
- XLR Barrie Strip and TRS connector
- +/-12 dB input gain
- 18dB/octave, 40hz bessel low cut filter



231S GRAPHIC EQUALIZER

- Dual 31 Band 2/3 octave constant Q
- Balance XLR and TRS connector
- +/-12 dB input gain
- 18dB/octave, 40hz bessel low cut filter



215S GRAPHIC EQUALIZER

- Dual 15 Band 2/3 octave constant Q
- Balance XLR and TRS connector
- +/-12 dB input gain
- 18dB/octave, 40hz bessel low cut filter



234S ACTIVE CROSSOVER

- 2/3/4 way Active Electronic Crossover
- Activates 40Hz Butterworth, 12 dB/Octave
- Balance XLR and TRS connector
- High pass, Low pass filter



166S COMPRESSOR / LIMITER

- Stereo Dual mode operation
- Program- adaptive expander/gates
- Accurate compression & gates threshold
- Balance XLR & TRS connectors

PCS-510 POWER SEQUENCER

- 8 Socket output + 2 Socket front output.
- 6000W total capacity, Max output current each socket 25A
- 60A Circuit breaker & with big digital voltmeter display

PC-901 POWER CONDITIONER

- 8 Channel output +1 Channel front output, 15A per channel
- Dual pull out light with light dimmer control
- USB port for charging 5V output
- Digital voltmeter display for easy voltage monitoring



SMX / MIX Series Compact Mixers



SMX-6BT (Bluetooth)

- 6 Channel Compact Mixer
- 2 Mic / Line, 2 Stereo Input
- Play/Record
- Headphones in
- 48V Phantom power
- Echo, Repeat, Delay effect
- Bluetooth/USB/MP3 function



SMX-8BT (Bluetooth)

- 8 Channel Compact Mixer
- 4 Mic / Line, 2 Stereo Input
- Play/Record
- Headphone in
- 48V Phantom power
- Echo, Repeat, Delay effect
- Bluetooth/USB/MP3 Music function



MIX-8BT (Bluetooth)

- 8 Channel Compact Mixer
- 4 Mic/line 2 Stereo input
- 3 Band EQ
- 24bit 99DSP Digital Effect
- Mute & Solo function
- Phantom Power 48V
- 2 Bus
- Headphone & Foot Switch
- 2 Aux out
- Bluetooth/USB/MP3 function



MIX-20BT (Bluetooth)

- 20 Channel Compact Mixer
- 16 Mic/line 2 Stereo input
- 3 Band EQ
- 24bit 99DSP Digital Effect
- Mute & Solo function
- Phantom Power 48V
- 2 Bus
- Headphone & Foot Switch
- 2 Aux out
- Bluetooth/USB/MP3 function



MIX-12BT (Bluetooth)

- 12 Channel Compact Mixer
- 8 Mic/line 2 Stereo input
- 3 Band EQ
- 24bit 99DSP Digital Effect
- Mute & Solo function
- Phantom Power 48V
- 2 Bus
- Headphone & Foot Switch
- 2 Aux out
- Bluetooth/USB/MP3 function



MIX-16BT (Bluetooth)

- 16 Channel Compact Mixer
- 12 Mic/line 2 Stereo input
- 3 Band EQ
- 24bit 99DSP Digital Effect
- Mute & Solo function
- Phantom Power 48V
- 2 Bus
- Headphone & Foot Switch
- 2 Aux out
- Bluetooth/USB/MP3 function

STUDIO Series

NEW!



NEW!



STUDIO 16

- 16 Channel Mixer
- 12 Mic / Line, 2 Stereo Input
- USB Record & Playback
- Headphones in
- 48V Phantom power each CH
- HPF (low Cut)
- 199 Dual DSP effect
- Bluetooth function
- 4 AUX output
- 4 Groups output
- 57(W) x 48(D) x 11(H)cm
- 7.9Kg

NEW!



STUDIO 24

- 24 Channel Mixer
- 16 Mic / Line, 4 Stereo Input
- USB Record & Playback
- Headphones in
- 48V Phantom power each CH
- HPF (low Cut)
- 199 Dual DSP effect
- Bluetooth function
- 4 AUX output
- 4 Groups output
- 75(W) x 48(D) x 11(H)cm
- 10.2Kg

STUDIO 32

- 32 Channel Mixer
- 24 Mic / Line, 4 Stereo Input
- USB Record & Playback
- Headphones in
- 48V Phantom power each CH
- HPF (low Cut)
- 199 Dual DSP effect
- Bluetooth function
- 4 AUX output
- 4 Groups output
- 99(W) x 48(D) x 11(H)cm
- 13.3Kg

PROFESSIONAL POWERED MIXERS

XPM Series



XPM-800

- 10 Channel Powered Mixer
- 8 Mic / Line 1 stereo Input
- 9 Band Graphic Equalizer
- 2 Powerful Fan Blower
- 550W X 2 @ 4 ohms
- Phantom Power 48V
- Mute & PFL function
- USB Playback / Record
- Dual 24 bit DSP effect
- 1 Aux Output



XPM-1200

- 14 Channel Powered Mixer
- 12 Mic / Line Stereo Input
- 9 Band Graphic Equalizer
- 2 Powerful Fan Blower
- 550W X 2 @ 4 ohms
- Phantom power 48V
- Mute & PFL function
- USB Playback / Record
- Dual 24 bit DSP effect
- 1 Aux Output

NEW!



GMX-10UB

- 10 Channel Powered Mixer
- 6 Mic / Line, 3 Stereo Input
- 1 AUX Out, 2 Groups Out
- 3 Band EQ Each Channel
- Headphone Jack
- 16 Preset Digital Effects
- Independent 3.5mm jack input
- 48V Phantom Power (Mic)
- USB MP3 Playback / Record
- Bluetooth Function
- 350W x 2 @ 4 Ohms

NEW!



POWERMIX-1000

- 10 Channel Powered Mixer
- 6 Mic / Line 2 Stereo Input
- 7 Band Graphic Equalizer
- 550W X 2 @ 4 ohms
- Phantom power 48V
- Mute & Solo function
- USB MP3 Playback / Record
- Bluetooth function
- 24 bit, 99 DSP effects
- 1 Aux Output



COMPACT MIXERS



Mate 6

- 6 Channel Compact Mixer
- 4 Mic/line 2 Stereo input
- 3 Band EQ
- 24bit 99DSP Digital Effect
- Mute & PFL function
- Individual Phantom Power 48V
- Headphone & Foot Switch
- 2 Aux out
- Bluetooth/USB/MP3 function
- 55(H) x 280(D) x 290(W)mm



Mate 8

- 8 Channel Compact Mixer
- 6 Mic/line 2 Stereo input
- 3 Band EQ
- 24bit 99DSP Digital Effect
- Mute & PFL function
- Individual Phantom Power 48V
- Headphone & Foot Switch
- 2 Aux out
- Bluetooth/USB/MP3 function
- 55(H) x 280(D) x 340(W)mm

WIRELESS MICROPHONE



ADT-2.0C

- Wired to Wireless Mic Adaptor
- 48V Phantom power
- Freq. Range: 500MHz - 980MHz
- 16 Selectable Frequencies
- Freq. Resp.: 40Hz - 20KHz
- Transmitter & Receiver Battery:
Rechargeable Li 3.7V (800mAh)
- Can also use with Condenser Mic



AKM-58

- Karaoke Microphone
- Direct adjustment: Volume, Channel, Echo, Treble & Bass
- Freq. Range: 673MHz - 695MHz
- 50 Selectable Frequencies / Mic
- Freq. Resp.: 45Hz - 18KHz
- Transmitter Battery: Li 3.7V (1300mAh)
- Receiver Battery : Li 3.7V (1000mAh)

UHF



NEW!

URX-2H / URX-2B

- Dual UHF Wireless Microphone • Selectable frequencies • Big Display for easy monitoring
- Low Battery LED Indicator • Front Antenna For Better Receiving
- Capable Up To 30 Meters Of Distance



CM-100UR (Paging Microphone)

- Transducer type: Condenser
- Freq. Resp.: 40Hz-15KHz
- Output Impedance: 200Ω
- Polar Pattern: Supercardioid
- Power Supply: Dc 12V, 4.5V (AA)
- USB (MP3 & REC function)
- With Chime function



UHF



PM-101 (Portable Wireless Microphone)

- Portable & Compact Design
- Dual UHF Microphone
- Selectable 16 Frequencies
- LED Display
- Detachable Antenna
- AA Battery Adapter (USB)

UHF



NEW!

LAV-100

- Freq. Range: 683.1MHz - 695.1MHz
- 20 Selectable Frequencies
- Freq. Resp.: 50Hz - 15KHz
- Transmitter & Receiver Battery Type: Rechargeable Li-Battery 3.7V (400 mA)
- Can also connect with mobile phone

UHF



NEW!

UHM-100

- Freq. Range: 683.1MHz - 695.1MHz
- 20 Selectable Frequencies
- Freq. Resp.: 50Hz - 15KHz
- Transmitter & Receiver Battery Type: Rechargeable Li-Battery 3.7V (400mA)

WIRELESS MICROPHONE

NEW!



UHF



Inductive charging



Charging port

RCM-77

- Dual UHF Wireless Microphone
- UHF Freq. : 636 - 695.7 MHz
- 200 Selectable Frequencies
- 100 Freq. each channel
- Auto frequency search function
- Easy to sync and operate
- Able to charge the handheld on receiver unit
- LCD display in receiver & transmitter
- Compact size receiver
- Dual Antenna Receiving System
- 3.7V 1100 mAh Li-ion rechargeable battery

RECHARGEABLE!



UHF



4X

Magnetic Lithium
rechargeable
battery



RECHARGEABLE!

UMC-500

- Dual UHF Wireless Microphone
- UHF Freq. : 636 - 695.7 MHz
- 200 Selectable Frequencies
- 100 Freq. each channel
- Auto Frequency Search function
- Easy to sync and operate
- Receiver display battery status
- 2 battery charging slot on receiver unit
- LCD display on transmitter & receiver
- 1U Space Rack Mountable
- Dual Antenna Receiving System
- 3.7V 1100 mAh Li-ion rechargeable battery

NEW!

WIRELESS MICROPHONE



Rack Mount
(Mounting Ear)

MR-250H

- Dual UHF Wireless Microphone
- 200 Selectable Frequencies
- Each receiver have 100 UHF frequencies can be selected.
- Dual Antenna, True Diversity receiving system.
- 1U space rack mountable.
- Big LCD display for easy viewing.
- Balance XLR and unbalance audio output.
- Soft touch button control, easy to sync frequencies and operate.
- The transmitter display battery status.



Rack Mount
(Mounting Ear)



UM-200S

- Dual UHF with 32 Selectable Frequencies
- USB rechargeable battery
- Charging port in receiver front panel for easy charging.
- 1U rack unit design
- Dual antenna
- AA battery holder



2X
AA Battery Holder



4X
USB Lithium rechargeable battery



NEW!

TRUE DIVERSITY Wireless Microphone

KEVLER / WIRELESS MICROPHONE



NEW!

ATC-2000

- Dual UHF (True Diversity) Wireless Microphone
- UHF Freq.: 615 - 665 MHz
- 200 Selectable Frequencies
- Auto Frequency Search function
- Easy to sync and operate
- Receiver display battery status
- LCD display on transmitter & receiver
- 1U Space Rack Mountable
- Quad Antenna Receiving System



NEW!

TDX-2000

- Dual UHF (True Diversity) Wireless Microphone
- UHF Freq.: 636 - 695.7 MHz
- 200 Selectable Frequencies
- Auto Frequency Search function
- Easy to sync and operate
- Receiver display battery status
- LCD display on transmitter & receiver
- 1U Space Rack Mountable
- Quad Antenna Receiving System



KEVLER / MICROPHONES
DYNAMIC

NEW! MICROPHONE



DM-1200



DM-950



DM-850



DM-750



PM-580



PM-830



PM-880



PM-930



iQ8

CONFERENCE SYSTEM



AM-300C
(Chairman's Unit)



AM-300D
(Delegate's Unit)

AM-300C (Chairman's Unit)

Push button switch for MIC ON/OFF
Priority button to override all active delegates units
Unidirectional electret condenser microphone
Red ring luminate to identify live unit
Frequency response: 70Hz-15KHz
S/N ratio at 1mV, input level -95dB
Sensitivity: -47±3dB
Microphone stem length: 41cm
Dual shielded captive cable

AM-300D (Delegate's Unit)

Push button switch for MIC ON/OFF
Unidirectional electret condenser microphone
Red ring luminate to identify live unit
Frequency response: 70Hz-15KHz
S/N ratio at 1mV, input level -95dB
Sensitivity: -47±3dB
Microphone stem length: 41cm
Dual shielded captive cable



AM-300 Conference system main unit

AM-300

Conference system main unit

Provides DC power to all contribution units
Simultaneous active delegate units
Din connector for additional extension unit
AC power requirement: 220V, 60Hz
Frequency response: 20Hz-18KHz
Distortion @ 1KHz: <0.3%

LM-501

(Chairman's Unit)

- Priority buttons
- Mic ON/OFF buttons
- Built-in 2W speaker
- Volume control
- Unidirectional condenser mic
- Red light indicate mic is ON

LM-502

(Delegate's Unit)

- Mic ON/OFF buttons
- Built-in 2W speaker
- Volume control
- Unidirectional condenser mic
- Red light indicate mic is ON



LM-501
(Chairman's Unit)

LM-502
(Delegate's Unit)

LM-500U

Conference system main unit

Record & Play function thru USB/SD with FM tuner.
Equipt with 3 groups for system connecting workable for 20 unit for each group

Single, multiple and many groups can be use simultaneously
Rack mountable main unit, include rack mounted ears
Output level LED indicator

Line volume for the unit source
Mic volume for the external mic connection
Master volume control the Line mic level
Balance XLR output

Extension to other main unit in case will use more than 60pcs conference mic



LM-500U Conference system main unit with USB/SD, FM & REC Function

CONFERENCE SYSTEM



QM-900C
(Chairman's Unit)

QM-900D
(Delegate's Unit)

QM-900 Conference system main unit w/ USB/SD, FM & REC Function

QM-900C

(Chairman's Unit)

- Priority buttons
- Mic ON/OFF buttons
- Built-in 2W speaker
- Volume control
- Unidirectional condenser mic
- Red light indicate mic is ON

QM-900D

(Delegate's Unit)

- Mic ON/OFF buttons
- Built-in 2W speaker
- Volume control
- Unidirectional condenser mic
- Red light indicate mic is ON

QM-900

(Conference system main unit)

- Record & Play function thru USB/SD with FM tuner.
- Equip with 3 groups for system connecting workable for 20 unit for each group
- Single, multiple and many groups can be use simultaneously
- Rack mountable main unit, include rack mounted ears
- Output level LED indicator
- Line volume for the unit source
- Mic volume for the external mic connection
- Master volume control the Line mic level
- Balance XLR output
- Extension to other main unit in case will use more than 60pcs conference mic

WIRELESS CONFERENCE SYSTEM

REC  Function



TCM-1000C
(Chairman's Unit)

TCM-1000D
(Delegate's Unit)

TCM-1000C

(Wireless Chairman's Unit)

- Priority buttons
- Mic ON/OFF buttons
- Unidirectional condenser mic
- Red light indicate mic is ON

TCM-1000D

(Wireless Delegate's Unit)

- Mic ON/OFF buttons
- Unidirectional condenser mic
- Red light indicate mic is ON

TCM-1000V

(Wireless Conference System main unit)

- Built-in 16 Channel WIFI frequencies
- Record & Play thru USB and with Bluetooth Function
- 5 groups of Channel, each channel have 130 frequencies
- FIFO function, only 4 units can use at the same time.
- Wireless capabilities support an infinite number of units.
- Built-in advanced encryption communication algorithm, completely eliminate communication errors and false action.
- Balance XLR & Unbalance PL output
- Automatic shutdown. Host standby for more than 30 min.
- Workable distance up to 50 meters, depend on environment.
- Main unit can be Rack mount.

PROFESSIONAL STAGE SPEAKER

PRX800 Series

NEW!



PRX-812

- 12" 2 way Bass Reflex
- Low 2.5" Vcoil
- Hi 1.7" Vcoil
- Exit 1"
- 800 Watts
- 8 ohms
- 97dB SPL
- Freq Resp. 43Hz- 20KHz
- 90 X 60 Dispersion

PRX-812D

- 500 Watts Amplifier
- 4 ohms
- 5 Preset DSP Mode
- 2 Combo XLR+1/4" Jack Input
- 1 XLR Mix Output
- Mic/Line (switchable)
- Size: 385(W)*340(D)*600(H)mm

NEW!



PRX-815

- 15" 2 way Bass Reflex
- Low 2.5" Vcoil
- Hi 1.7" Vcoil
- Exit 1"
- 800 Watts
- 8 ohms
- 98dB SPL
- Freq. Resp. 40Hz- 20KHz
- 90 X 60 Dispersion

PRX-815D

- 500 Watts Amplifier
- 4 ohms
- 5 Preset DSP Mode
- 2 Combo XLR+1/4" Jack Input
- 1 XLR Mix Output
- Mic/Line (switchable)
- Size: 500(W)*415(D)*720(H)mm

NEW!



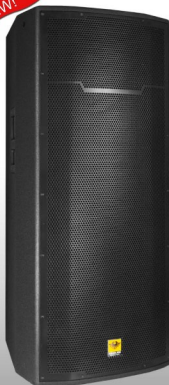
PRX-818S (Passive)

- 18" Sub Bass
- Low 4" Vcoil
- 800 Watts
- 8 ohms
- 101dB SPL
- Freq. Resp.: 30Hz-2KHz

PRX-818SD (Active)

- Class D
- 1200 Watts Amplifier
- XLR Line Input/Output
- Low Pass filter 30Hz-300Hz
- Phase Adjust: 0°-180° Degrees
- Size: 630(H)*700(D)*780(H)mm

NEW!



PRX-825 (Passive)

- Dual 15" Bass Reflex
- Low 2.5" Vcoil
- Hi 1.7" Vcoil
- Exit 1"
- 1400 Watts
- 4 ohms
- 103dB SPL
- Freq. Resp.: 35Hz - 20KHz
- 90 X 60 Dispersion

PRX-825D (Active)

- 1200 Watts Amplifier
- 4 ohms
- 5 Preset DSP Mode
- 2 Combo XLR+1/4" Jack Input
- 1 XLR Mix Output
- Mic/Line (switchable)
- Size: 535(W)*446(D)*1065(H)mm

PROFESSIONAL STAGE SPEAKER

NEW!



SRX-812

- 12" 2 way Bass Reflex
- Low 3" Vcoil
- Hi 1.7" Vcoil
- 1000 Watts
- Exit 1"
- 8 ohms
- 98dB SPL
- 90 X 60 Dispersion

SRX-812A (ACTIVE)

- Class D
- 600 Watts Amplifier
- XLR Line Input/Output

NEW!



SRX-815

- 15" 2 way Bass Reflex
- Low 3" Vcoil
- Hi 1.7" Vcoil
- 1000 Watts
- Exit 1"
- 8 ohms
- 99dB SPL
- 90 X 60 Dispersion

SRX-815A (ACTIVE)

- Class D
- 600 Watts Amplifier
- XLR Line Input/Output

NEW!



SRX-825

- Dual 15" Bass Reflex
- Low 3" Vcoil
- Hi 3" Vcoil
- 2200 Watts
- Exit 1.5"
- 4 ohms
- 105dB SPL
- 90 X 60 Dispersion

SRX-825A (ACTIVE)

- Class D
- 1200 Watts Amplifier
- XLR Line Input/Output

NEW!



SRX-818S

- 18" Sub Bass
- Low 4" Vcoil
- 1000 Watts
- 8 ohms
- 99dB SPL
- Freq. Resp.: 38Hz-200Hz

SRX-818SA (ACTIVE)

- Class D
- 1200 Watts Amplifier
- XLR Line Input/Output
- Low Pass filter 30Hz-300Hz
- Phase Adjust: 0-180 Degrees

NEW!



SRX-828S

- Dual 18" Sub Bass
- Low 4" Vcoil
- 2000 Watts
- 4 ohms
- 103dB SPL
- Freq. Resp.: 32Hz-200Hz

SRX-828SA (ACTIVE)

- Class D
- 2 x 1200 Watts Amplifier
- XLR Line Input/Output
- RJ45 (Software Adjust Parameter)

CVX & MR Series SPEAKER

CVX-15D (Active)

- 15" 2 way Bass Reflex
- Low 3" Vcoil
- Hi 1.7" Vcoil
- Exit 1"
- 98dB SPL
- Freq. Resp. 38Hz- 20KHz
- Coverage 90° X 60°
- 500W Class D Amplifier
- 5 Preset DSP Mode
- 2 Combo XLR+1/4" Jack Input
- 1 XLR Mix Output
- Mic/Line (switchable)
- Size: 70(H) x 44(W) x 41(D)cm



CVX-21SD (Active)

- 21" Subwoofer
- Low 5" voice coil
- Max SPL: 138dB
- Freq. Resp.: 30Hz-200Hz
- 1500W Class D Amplifier
- XLR Line Input/Output
- LPF: 80Hz-150Hz
- Phase: 0°-180°
- Size: 81(H) x 60(W) x 82(D)cm



MR-12A (Active)

- 12" Monitor Speaker System
- 600W Class D Amplifier
- Wave guide Horn 70° x 40°
- Low 3" Vcoil
- Hi 1.7" Vcoil
- 8 ohms
- Max SPL: 122dB, 128dB Peak
- Freq. Resp.: 60Hz-20KHz
- Size: 45(W) x 46(D) x 33(H)cm



MR-15A (Active)

- 15" Monitor Speaker System
- 600W Class D Amplifier
- Wave guide Horn 70° x 40°
- Low 3" Vcoil
- Hi 1.7" Vcoil
- 8 ohms
- Max SPL: 124dB, 130dB Peak
- Freq. Resp.: 60Hz-20KHz
- Size: 52(W) x 49.5(D) x 34.5(H)cm





VPX-312 (PASSIVE SUB)

- Freq. Resp.: 50Hz - 300Hz
- Sensitivity: 98dB
- Rated Power: 600W
- LF Driver: 2 x 12" / 3" Vcoil
- Impedance: 8 ohms
- Connectors: 2 x NL4 Speaker

VPX-310 (PASSIVE)

- Freq. Resp.: 50Hz - 300Hz
- Sensitivity: 98dB
- Rated Power: 800W
- LF Driver: 2 x 10" / 3" Vcoil
- HF Driver: 1 x 3" Vcoil
- Impedance: 8 ohms
- Connectors: 2 x NL4 Speaker



**VTX-935 (PASSIVE)
3 WAY DESIGN**

- Freq. Resp.: 60Hz - 20KHz
- Sensitivity: 101dB
- Rated Power: 1000W
- LF Driver: 2 x 10" / 3" Vcoil
- MF Driver: 1 x 3.5" Vcoil
- HF Driver: 1 x 1.77" Vcoil
- Impedance: 8 ohms
- Dispersion: 90° X 15°
- Connectors: 2 x NL4 Speaker

VTX-935A (ACTIVE)

- Class D Amplifier 1200W
- XLR Line input/output
- High Pass Filter: 30Hz to 150Hz
- Powerkon Blue/white



LX-212A (ACTIVE)

- Freq. Resp.: 60Hz - 22KHz
- Sensitivity: 103dB
- Amplifier Class D: 1500W
- LF Driver: 2 x 12" / 2.5" Vcoil
- HF Driver: 2 x 1.77" Vcoil
- Impedance: 8 ohms
- Dispersion: 110 X 15 degrees
- Connectors: 2 x RJ45 Input / Output
2 x PowerCon Blue / White



DSP77



VRX-915SA (Single 15")

- Freq. Range: 40Hz - 25kHz
- Amplifier Power: 800W x 2 RMS
- Sensitivity: 126dB
- Maximum SPL: 126dB Continuous
- Driver: 1 x 15" Bass Driver
- Impedance: 8 ohms
- Connectors: 2 x XLR input/output
2 X PowerCon Blue/White
- Net Weight: 33.8 kg/pc

VRX-928 (Single 8")

- Freq. Range: 80Hz - 20KHz
- Amplifier Power: 300W RMS
- Sensitivity: 96dB
- Maximum SPL: 117dB Continuous
- LF Driver: 1 x 8" / 2" Vcoil
- Impedance: 16 ohms
- Connectors: 2 x XLR input/output
2 X PowerCon Blue/White
- Net Weight: 9.38 kg/pc



EZ-112A

- Built-in DSP control
- Freq. Range: 50Hz - 20kHz
- Amplifier Power: 700W + 100W
- Sensitivity: 98dB
- Maximum SPL: 126dB Continuous
- LF Driver: 1 x 12" / 3" Vcoil
- HF Driver: 2 x 1" exit / 1.7" Vcoil
- Impedance: 4 ohms
- Dispersion: 110°
- Connectors: 2 x XLR input/output
2 X PowerCon Blue/White
- Net Weight: 20 kg/pc

EZ-118SA

- Built-in DSP control
- Freq. Range: 40Hz - 300Hz
- Amplifier Power: 1200W
- Sensitivity: 99dB
- Maximum SPL: 127dB Continuous
- LF Driver: 1 x 18" / 4" Vcoil
- Impedance: 4 ohms
- Connectors: 2 x XLR input/output
2 X PowerCon Blue/White
- Net Weight: 42 kg/pc



HLT-12X (Active)

- Dual 12" Hybrid Design
- 600 + 1200 Watts Dual Amplifier
- Low 3" Vcoil
- Hi 4 X 1.7" Vcoil
- Exit Throat 1"
- Waveguide 90 x 30 deg.
- 4 ohms
- SPL 136dB Cont. 142dB Peak
- XLR Input/Output
- Built in DSP
- Powerkon Blue/White



VRX-918SA (Single 18")

- 18" Sub Bass
- 900 Watts Amplifier
- Low 4" Vcoil
- 8 ohms
- 98dB SPL
- XLR input/output
- Powercon Blue/White
- Lowpass filter 80Hz-250Hz

VRX-932A (Single 12")

- 12" 2 Way Bass Reflex
- 700 Watts Amplifier
- Low 3" Vcoil
- Hi 3 X 1.7" Vcoil
- Exit Throat 1"
- Waveguide 100 deg.
- 8 ohms
- 98dB SPL
- XLR Input/Output
- High Pass Filter 30-150Hz
- Powerkon Blue/White

LC Series



LC-10X (Passive)

- Type: 2-way coaxial speaker
- LF: 10" woofer 2" voice coil
- HF: 1.77" voice coil 1" exit
- Freq. Resp.: 70Hz-20KHz
- Coverage angle: 100° x 100°
- Sensitivity: 104dB
- Peak: 139dB
- Impedance 8Ω
- Rated Power: 300W

LC-18SD (Active)

- Type: 18" Subwoofer
- LF: Woofer 4" voice coil
- Freq. Resp.: 28Hz-100Hz
- Sensitivity: 100dB
- Peak: 135dB
- Impedance 8Ω
- Rated Power: 1200W



KS-18A (Active)

- Subwoofer
- LF: 18" Driver 4" voice coil
- Freq. Resp.: 31Hz-120Hz
- Sensitivity: 101dB
- Peak: 133dB
- Impedance 8Ω
- 1000W Class D amp
- 78.5(W) x 76(D) x 54(H)cm

K-10A (Active)

- Type: 2-way Line array speaker
- LF: 2 x 10" woofer 3" voice coil
- HF: 1 x 3" voice coil 1.5" exit
- Freq. Resp.: 45Hz-20KHz
- Coverage angle: 110° x 10°
- Sensitivity: 106dB
- Peak: 142dB
- Impedance 8Ω
- 1000W Class D Amp
- XLR input/output
- DSP Management control
- size: 78.5(W) x 45(D) x 30(H)cm



KS-28A (Active)

- Subwoofer
- LF: 2 x 18" Driver 4" Vcoil
- 2000W Class D amp
- Freq. Resp.: 28Hz-200Hz
- Sensitivity: 107dB
- Max SPL: 142dB
- 4 ohms
- 2 x 1200 Class D Amplifier
- XLR Line Input/Output
- DSP Management control
- Size: 134(W) x 72(D) x 56.5(H)cm

SUBWOOFERS



VT-18S

- 18" Subwoofer (long throw)
- Low 5" Vcoil
- 1200 Watts
- 8 ohms
- 105dB SPL
- Speakon NL4 x 2
- 723 x 546 x 736mm



VT-24SA

- Active Sub Woofer 24"
- Solid Deep Bass
- Class D Amplifier
- Low 5" Vcoil
- Freq. Resp.: 22Hz - 90Hz
- 2400 Watts
- Available in XLR & RJ45 input (If using network cable, can match with DSP88 processors)



KRX-615SA

- Active Subwoofer 15"
- Class D Amplifier
- 600 Watts
- 4 ohms
- XLR Line Input/Output
- Dimension (HxWxD)
530 x 440 x 560mm



KRX-618SA

- Active Subwoofer 18"
- Class D Amplifier
- 800 Watts
- 4 ohms
- XLR Line Input/Output
- Dimension (HxWxD)
615 x 510 x 605mm

LXD Line array



LX-18S

- 18" Sub bass
- 1000 Watts
- 4" Voice Coil
- Freq. Response: 32Hz - 400kHz
- Sensitivity: 100dB
- Maximum SPL: 133dB
- Impedance: 4 ohms
- Connectors: Speakon NL4



LX-10

- 10" 2 Way Bass Reflex
- 500 Watts
- Freq. Range: 80Hz - 20KHz
- Sensitivity: 104dB
- Maximum SPL: 136dB
- Low 2" Voice coil, High 2x1" Voice coil
- Impedance: 12.8 ohms
- Connectors: Speakon NL4



LXD-7000

- Power 4 X 1800 Watts @ 2.5 Ohms
- Total Harmonic Distortion <0.005%
- Signal to noise ratio >112dB
- Damping Factor >1000
- Slew rate >50v / us
- Build in preset DSP parameters
- Direct Energy Amplifying
- Constant Zero Distortion Power Control
- Dual Reactor Phase Shift Control
- Overheat and Clip Soft Protection

DST SERIES COMPRESSION DRIVER



DST-34

- Titanium Dome
- 34mm Voice Coil
- 8 ohms
- 1" Exit Throat
- 200 Watts



DST-44

- Titanium Dome
- 44mm Voice Coil
- 8 ohms
- 1" Exit Throat
- 300 Watts



DST-50

- Titanium Dome
- 51mm Voice Coil
- 8 ohms
- 1" Exit Throat
- 500 Watts



DST-75

- Titanium Dome
- 75mm Voice Coil
- 8 ohms
- 2" Exit Throat
- 700 Watts

COMPRESSION DRIVER

TDU-300

- Titanium Dome
- 44mm Voice Coil
- 8 ohms
- 1" Exit Throat
- 300 Watts



T3

- Titanium Dome
- 44mm Voice Coil
- 8 ohms
- 1" Exit Throat
- 300Watts



TTD-300

- Treated Titanium Dome
- 44mm Voice Coil
- 8 ohms
- 1" Exit Throat
- 300 Watts



T5

- Titanium Dome
- 51mm Voice Coil
- 8 ohms
- 1" Exit Throat
- 500Watts



T-1000

- Titanium Dome
- 75mm Voice Coil
- 8 ohms
- 2" Exit Throat
- Screw Type
- 1000 Watts Max



T7

- Titanium Dome
- 75mm Voice Coil
- 8 ohms
- 2" Exit Throat
- 600Watts



T-850

- Titanium Dome
- 75mm Voice Coil
- 8 ohms
- 2" Exit Throat
- 850Watts



NEODYMIUM COMPRESSION DRIVER



NT-25

- Phenolic Dome
- 25mm Voice Coil
- 8 ohms
- 1" Exit Throat
- Neodymium Magnet
- 200 Watts



NT-38

- Phenolic Dome
- 3" x 8" Size Horn
- 25mm Voice Coil
- 8 ohms
- 1" Exit Throat
- Neodymium Magnet
- 200 Watts



HT-55

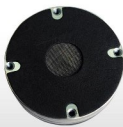
- Mylar Dome
- 5" x 5" Size Horn
- 25mm Voice Coil
- 8 ohms
- 1" Exit Throat
- Neodymium Magnet
- 200 Watts



NEW!

NST-350 (Super Tweeter)

- Polyester Film Diaphragm
- 4" Ø Diameter
- 32mm Voice Coil
- 5 ohms
- Neodymium Magnet
- 350 Watts



NT-450

- Titanium Dome
- 44mm (1.7") Voice Coil
- 8 ohms
- 1" Exit Throat
- Neodymium Magnet
- 450 Watts



NT-650

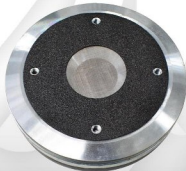
- Titanium Dome
- 65mm (2.5") Voice Coil
- 8 ohms
- 1.5" Exit Throat
- Neodymium Magnet
- 650 Watts



NEW!

NT-1000

- Titanium Dome
- 100mm (4") Voice Coil
- 8 ohms
- 2" Exit Throat
- Neodymium Magnet
- 1000 Watts



GT Series SPEAKER



GT-100S

- 1" Mylar Super Dome Tweeter
- Power handling: 100W
- Impedance: 8 ohms
- Sensitivity: 98 dB
- Freq. Resp.: 2KHz-20KHz



GT-4M

- 4" Cone Midrange
- Power handling: 120W
- Impedance: 8 ohms
- Sensitivity: 94 dB
- Freq. Resp.: 650Hz-9KHz



GT-5M

- 5" Cone Midrange
- Power handling: 150W
- Impedance: 8 ohms
- Sensitivity: 96 dB
- Freq. Resp.: 600Hz-8KHz



GT-12W

- 12" Bass Driver
- Power handling: 300W
- Impedance: 8 ohms
- Sensitivity: 98dB
- Freq. Resp.: 50Hz-7KHz



GT-15W

- 15" Bass Driver
- Power handling: 500W
- Impedance: 8 ohms
- Sensitivity: 98dB
- Freq. Resp.: 45Hz-7KHz

**INSTRUMENTAL
SPEAKER*****KPA Series*****KPA-1230****KPA-1530****KPA-1550****KPA-155L**

LED Light Mesh Cover

MODEL	IMPEDANCE	SENSITIVITY	FREQ. RESP.	VOICE COIL	POWER	NOMINAL DIAMETER
KPA-1230	8 ohms	97dB	43Hz-4.5KHz	2"	300W	12"
KPA-1530	8 ohms	96dB	55Hz-8KHz	2"	300W	15"
KPA-1550	8 ohms	98dB	45Hz-3.5KHz	2.5"	500W	15"
KPA-155L	8 ohms	98dB	45Hz-3.5KHz	2.5"	500W	15"

KEVLER / PRO INSTRUMENTAL SPEAKERS

PRO INSTRUMENTAL SPEAKER



BNC-1230



BNC-1240



BNC-1530



BNC-1840



AT-1840F



SLD-1850



MODEL	IMPEDANCE	SENSITIVITY	FREQ. RESP.	VOICE COIL	POWER	NOMINAL DIAMETER
BNC-1230	8 ohms	99dB	40hz-3.5KHz	3"	600W	12"
BNC-1240	8 ohms	102dB	40Hz-3.2KHz	4"	1200W	12"
BNC-1530	8 ohms	101dB	35Hz-3KHz	3"	600W	15"
BNC-1840	8 ohms	102dB	33Hz-2KHz	4"	1200W	18"
AT-1840F	8 ohms	102dB	35Hz-2KHz	4"	1200W	18"
SLD-1850	8 ohms	98dB	35Hz-3KHz	5"	1600W	18"

PROFESSIONAL DRIVERS

PREMIUM TRANSDUCER

ATC Series



ATC-12BL

- Nominal Diameter 12"
- Power 700W
- 8 Ohms
- 3" Vcoil
- Freq Resp. 38Hz - 4.5KHz
- 99dB



ATC-15BL

- Nominal Diameter 15"
- Power 700W
- 8 Ohms
- 3" Vcoil
- Freq Resp. 35Hz - 4KHz
- 102dB



ATC-18BL

- Nominal Diameter 18"
- Power 1300W
- 8 Ohms
- 4" Vcoil
- Freq Resp. 32Hz - 3.5KHz
- 103dB

STX/VX Series



STX-1840

- Nominal Diameter 18"
- Power 1400W
- 8 Ohms
- 4" Vcoil
- Freq Resp. 35Hz - 1.5KHz
- 105dB



STX-1845

- Nominal Diameter 18"
- Power 1400W
- 8 Ohms
- 4.5" Vcoil
- Freq Resp. 35Hz - 2KHz
- 105dB



STX-1850

- Nominal Diameter 18"
- Power 1600W
- 8 Ohms
- 5" Vcoil
- Freq Resp. 35Hz - 1.5KHz
- 106dB



VX-184

- Nominal Diameter 18"
- Power 1300W
- 8 Ohms
- 4" Vcoil
- Freq Resp. 35Hz - 2KHz
- 103dB

PROFESSIONAL DRIVERS**DUAL MAGNET SUBWOOFERS**

15 DM 800



15 TM 1200



15 DM 1800



12 DM 600



18 TM 1200



18 DM 1800



MODEL	IMPEDANCE	SENSITIVITY	FREQ. RESP.	VOICE COIL	POWER	NOMINAL DIAMETER
12 DM 600	8 ohms	98dB	50HZ-3KHz	2.5"	600W	12"
15 DM 800	8 ohms	99dB	40HZ-3KHz	2.5"	800W	15"
15 TM 1200	8 ohms	95dB	40HZ-3KHz	4"	1200W	15"
18 TM 1200	8 ohms	96dB	35HZ-2.5KHz	4"	1200W	18"
15 DM 1800	8 ohms	96dB	45HZ-1.5KHz	5"	1800W	15"
18 DM 1800	8 ohms	97dB	43HZ-1.2KHz	5"	1800W	18"

MC-01 BR Microphone Cable (BRAIDED)



MC-02 SP Microphone Cable (SPIRAL)



**XLR
CONNECTOR**



MICROPHONE CABLE

- 100 meters per roll
- Wooden spool



SPEAKON



**PL
CONNECTOR**
(Gold Plated)



STANDS & BRACKETS



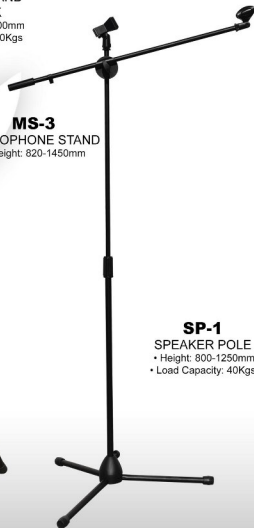
NB-908
SPEAKER BRACKET
• Load Capacity: 50Kgs



SS-5
SPEAKER STAND
• Height: 1000-1860mm
• Load Capacity: 50Kgs



SS-8
SPEAKER STAND
W/ CRANK
• Height: 1200-2600mm
• Load Capacity: 90Kgs



MS-3
MICROPHONE STAND
• Height: 620-1450mm

SP-1
SPEAKER POLE
• Height: 800-1250mm
• Load Capacity: 40Kgs



SP-2
SPEAKER POLE
W/ CRANK
• Height: 830-1470mm
• Load Capacity: 40Kgs



Kix
AUDIO

BMX-4UP

- Built-in Bluetooth
- Built-in MP3 player
- REC & Play Music thru Computer
- 2 Mic + 1 Stereo Line Inputs
- Built-in 16 Bit DSP Processor
- 3 Band EQ On All Channels
- Peak LED (All Channels)
- High Accurate Level Indicator
- Phantom Power Switch (+48V)



Kix
AUDIO

BMX-8UP

- Built-in Bluetooth
- Built-in MP3 player
- REC & Play Music thru Computer
- 4 Mic + 2 Stereo Line Inputs
- Built-in 16 Bit DSP Processor
- 3 Band EQ On All Channels
- Peak LED (All Channels)
- High Accurate Level Indicator
- Phantom Power Switch (+48V)

ABS HORNS & PINLOCKS



H-310

- Size (W250 x H250 x D135 mm)
- ABS Plastic
- 1" Exit Throat



H-315

- Size (W250 x H250 x D135 mm)
- ABS Plastic
- 1.5" Exit Throat



H-3002

- Size (W300 x H190 x D120 mm)
- ABS Plastic
- 1.5" Exit Throat



H-5002

- Size (W378 x H200 x D235 mm)
- ABS Plastic
- 2" Exit Throat



H-7003

- Size (W450 x H250 x D205 mm)
- ABS Plastic
- 2" Exit Throat



Visit us on



Facebook



Youtube



Website